

In 2013, the Worcester Public Schools obtained 6 Claremont Street from the City of Worcester as a tax foreclosed property. The property is a vacant lot in fairly close proximity to the school. It was the intent at the time to use this property as either off-street parking or playground space for Claremont and Woodland Academies.

In the planning discussions with the building principals, it was the intent to consider making this lot available for off-street parking for school employees, while at the same time convert the existing surface parking lot at the corner of Woodland and Oberlin to playground space. The 6 Claremont Street parcel is too far away from the school to give proper support of the supervision of students and oversight of the property from the school but would make suitable location for employee parking. The current outdoor parking lot is small but is near the existing asphalt playground and directly across the street from the school. The plan was to convert this existing parking lot to soft play surfaces and play structures. This would give a recreational opportunity that currently does not exist at the school or in near proximity for our students.

In recent conversations with both school principals, it has been deemed unpractical space to be used by the schools. The schools do not favor making the lot a parking lot. The upkeep of the lot has become problematic as it requires constant clearing and cleaning; and the schools have not used the lot in the more than four years since the district has taken possession of the lot. The Administration has had conversations with the City Administration, including Economic Development, and it is the consensus that the best use of the lot would be to revert the property to the City and allow the Economic Development find the best use of the lot with the surrounding neighbors and community groups.

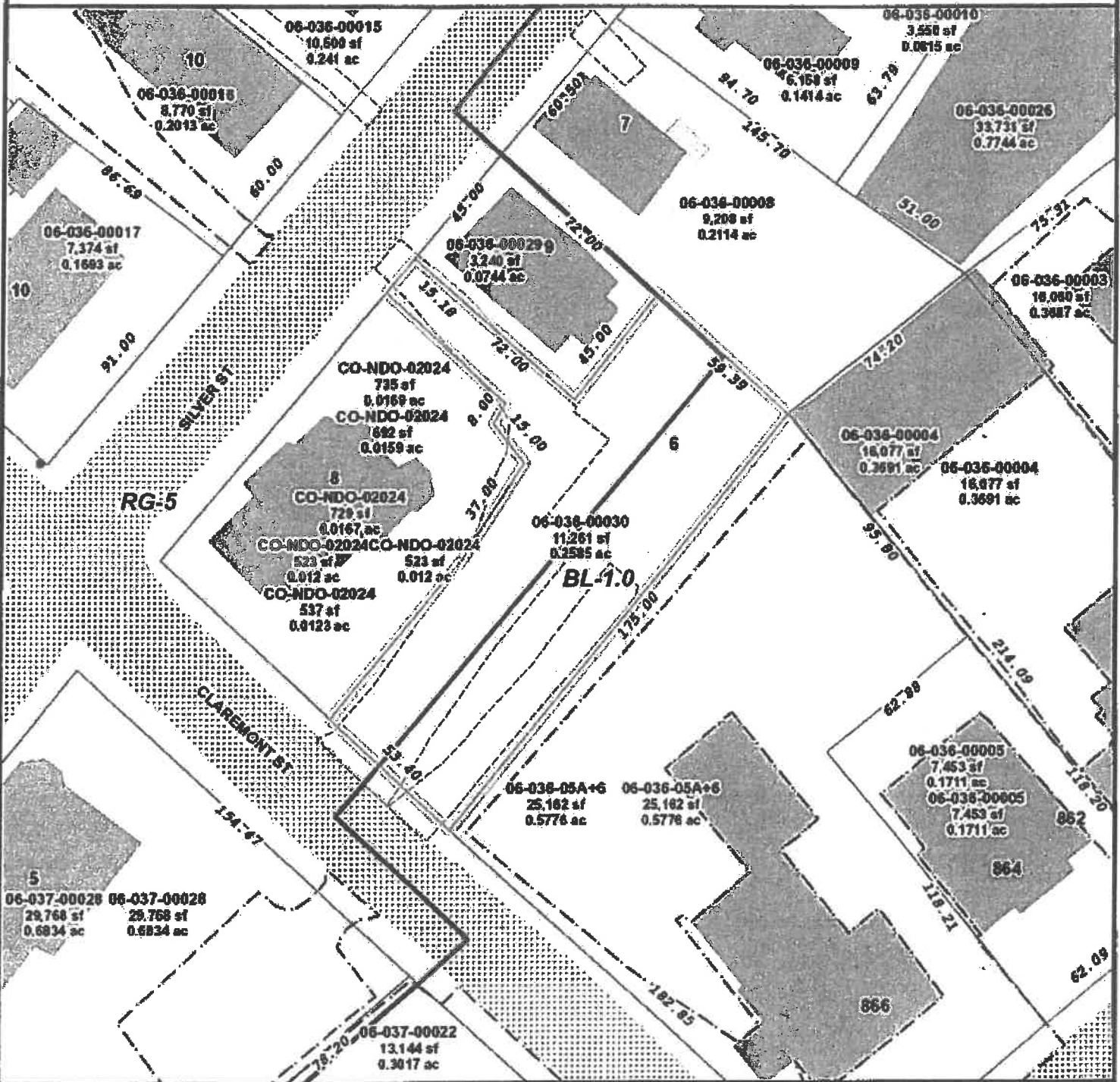
Therefore, the Administration recommends that the School Committee declare the property at 6 Claremont Street as no longer needed for public school purposes. Attached is an order prepared by the City Solicitor for this action.

SCHOOL COMMITTEE

City of Worcester

BE IT RESOLVED that the School Committee of the city of Worcester hereby declares the property located at 6 Claremont Street (Assessors Parcel 06-036-00030) as no longer needed for public school purposes.

6 CLAREMONT ST - 0603600030



- LEGEND**
- ◆ Hydrants
 - Zoning
 - Driveways
 - Parking Lots
 - ▭ Parcels
 - Streams
 - ▭ Ponds
 - ▭ Parks
 - ▭ Buildings
 - ▭ Building Deck/Patio
 - City



City of Worcester
 Geographic Information System
 Technical Services Division
 Worcester, Massachusetts

Map Date:
 February 28, 2013

Map Scale:
 1" = 47 ft

DATA SOURCES:
 Basemap data: City of Worcester Geographic Information System
 Original Data - Digitized at 1:480 scale (Data true resolution: 1 inch = 40 feet).
 Updated Using Spring 2003 Photography at 1 inch = 100 feet
 Further Updates Using City of Worcester Information

COORDINATE SYSTEM:
 All map data is in the Massachusetts State Plane Coordinate system,
 North American Datum of 1983, Massachusetts Mainland Zone (4151).

