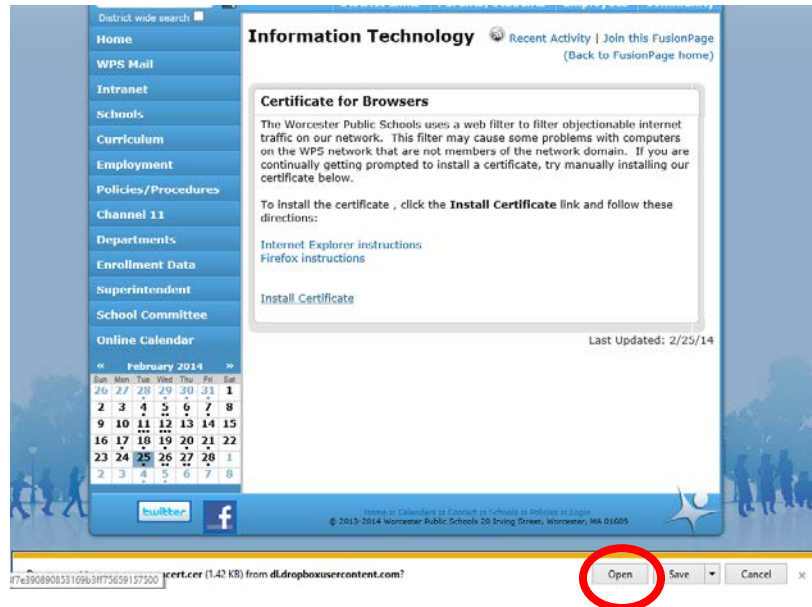
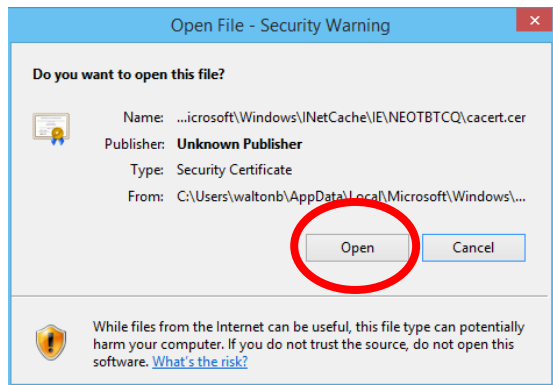


Internet Explorer, installing WPS filtering certificate

Click Install Certificate and then choose **Open**



Choose **Open** (or **Allow**)



Click **Install Certificate**

Click **Next**, then **Next**, **Finish**, and then **OK**.

(older versions of Internet Explorer may ask where you want to install the certificate. You have to place the certificate in the **Trusted Root Certificate folder** for it to work on older version of Internet Explorer. Click "Browse" when it asks you where to put the certificate and choose **Trusted Root Certificate folder** – this is very important, you must choose **Trusted Root Certificate folder**.)

You are done.

