

**Mary Ellen Scanlon
Principal**

**Christine McSherry
Assistant Principal**

**315 Saint Nicholas Avenue
Worcester, Massachusetts 01606
(508) 799-3575**

Dear Worcester Arts Families,

Each year, we reflect on our drop-off and pick-up procedures to make sure that we have systems in place that allow students to get to school safely and efficiently. ***Please see below for helpful visual maps that outline drop off and pick up procedures.*** We gently remind families of the following routine:

Morning Drop Off Procedures

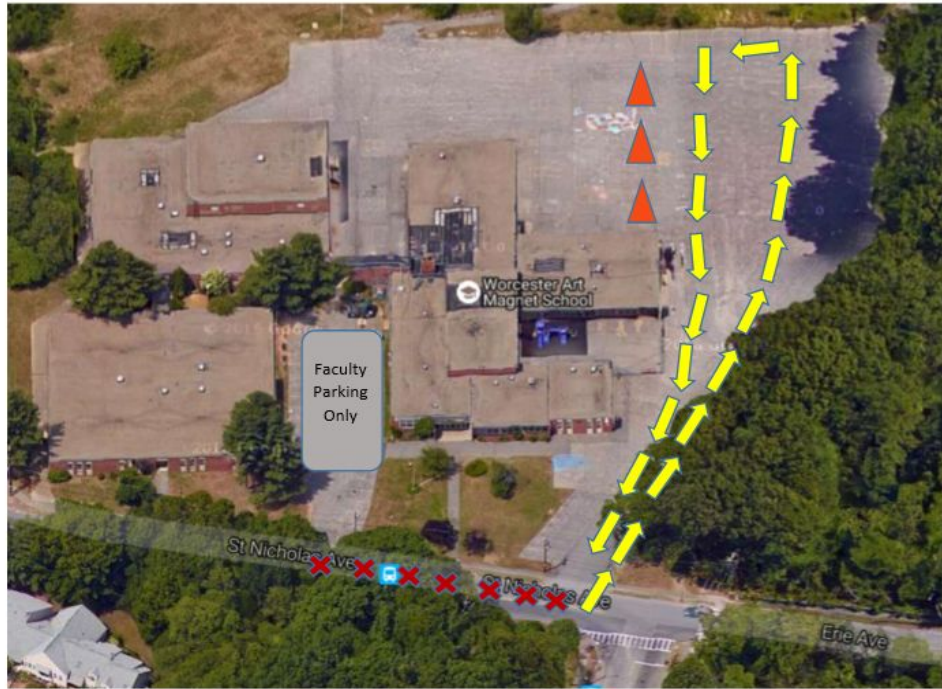
- Drop off begins at 8:00 am. Staff members are not on duty to monitor students prior to that time.
- Enter into the parking lot to the right of the school and remain in the single file vehicle drop-off line.
- Watch for staff members on duty to signal how far to pull your car up in the line.
- Safely exit the parking lot in a single line.
- **Please do not park in the lot during morning drop off. It is very dangerous to walk across the parking lot.**

Thank you for your cooperation and support as we work to make drop off and pick up safe for students, families and staff.

Mary Ellen Scanlon,

Principal

Worcester Arts Magnet School Parent Drop-Off Procedure



- Drop off is not allowed in the front of the school.
- The parking lot to the left of the school is for faculty parking only.
- Enter the driveway to the right of the school and follow route to cones.
- If your child needs assistance exiting vehicle please proceed to the first cone.

Worcester Arts Magnet School Parent Pick-Up Procedure

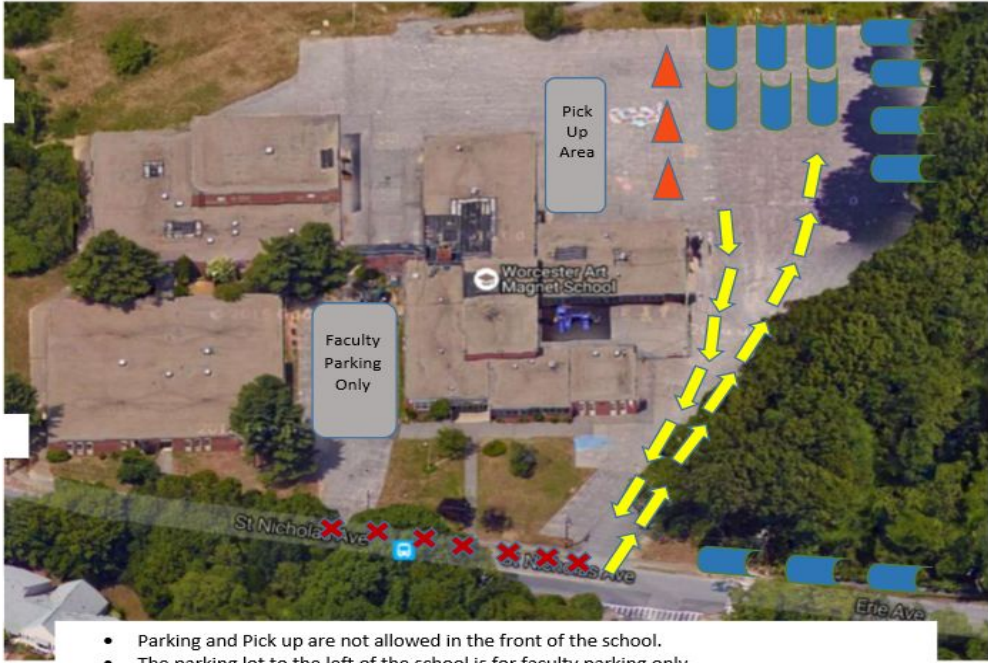
- 

Pick up route
- 

No parking or pick up
- 

Vehicle parking area
- 

No parking to left of cones



- Parking and Pick up are not allowed in the front of the school.
- The parking lot to the left of the school is for faculty parking only.
- Enter the driveway to the right of the school and follow route to vehicle parking area.
- Parents must park, exit vehicle and walk to pick up area.
- There is No entrance to the right of school after 2:30 pm.
- After 2:30 pm you may park alongside the street in the vehicle parking area